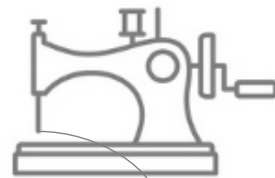


# PatArchibald

Textile Artist, Teacher and Writer

## ESCAPE TO THE CROFT STITCHING RETREATS ON NORTH UIST More Details of the Course



Thank you so much for your interest in joining me for a week of creativity in North Uist in my new studio home. Not only am I thrilled to be leading the course which will be based in my house, but I will also be giving you a lovely Hebridean experience. Your week with me will include lots of stitching inspired by your island surroundings, you will meet and work with other artisans in the area, enjoy Western Isles hospitality and you might even be able to try your hand at shearing some of my sheep! Every day at the croft you will enjoy coffee/tea/home baking and a soup and sandwich lunch.

Below is an outline of the five days that you will spend with me (subject to change depending on weather).

### Day One

Arrive at the croft at 9.30am to settle in and enjoy a coffee before we meet Corinne Krause. Corinne is a book binder who produces bespoke books from her business at Sollas, [www.sollasbooks.com](http://www.sollasbooks.com) in the north of the island. Over the morning, she will be teaching you how to make a sketchbook which will then be your resource for your own drawings, inspiration and a scrapbook for your stitching ideas.

In the afternoon we will start work on our project and finish at 5pm.

As the summer evenings are long here and if you have your own transport, I suggest that you take a tour around North Uist in the evening and perhaps stop off at Balranald, the bird reserve and further on at Corinne's studio to see more of her work before you head back to your hotel for your evening meal. We will be visiting the other islands later in your stay.

### Day Two

Arrive at the croft between 9.30 and 10am for a whole day of stitching and relaxing, ending at 5pm.

### Day Three

Arrive at the croft between 9.30 and 10am for another day of stitching. We will finish at 4.15pm today to allow us time to get to Shoreline Stoneware in Locheport for a pottery workshop. [www.shoreline-stoneware.co.uk](http://www.shoreline-stoneware.co.uk). There you will meet Louise Cook in her beautiful new studio/gallery who will lead you through a short pottery workshop. There will be a little bit of homework that you will need to prepare in advance of the stitching retreat that will involve a small piece of knitting but more of that later.....You will be able to complete two pieces of work with Louise; one will be in porcelain, and one will be stoneware. She will fire both pieces and send them to you once you are home. Throughout the workshop she will relate local tales of the industries that used to exist in Locheport and serve tea and coffee. We will finish around 7pm in time for you to return to your accommodation for your evening meal.



YouTube

Etsy

70 SILVERKNOWES VIEW, EDINBURGH, EH4 5PS, SCOTLAND  
33A LOCHEPORT, NORTH UIST, OUTER HEBRIDES, HS6 5EU  
MOBILE: 07773 268135  
[www.patarchibald.com](http://www.patarchibald.com) e-mail: [info@patarchibald.com](mailto:info@patarchibald.com)

# PatArchibald

Textile Artist, Teacher and Writer

## Day Four

We will start our day from the croft at 9.30am in my minibus and then head to Uist Wool on the island of Grimsay. [www.uistwool.com](http://www.uistwool.com). There we will get a 'behind the scenes' tour of the wool production there. (This is where the fleeces from our Black Hebrideans go). You will be able to buy their unique knitting yarn. They have a lovely selection of patterns by their own pattern designer but perhaps bring your own patterns if you need guidance for amounts. We can stop for a coffee at the local community centre and then head to South Uist to visit Hebridean Jewellery, [www.hebrideanjewellery.com](http://www.hebrideanjewellery.com), where you can see how their jewellery is made, shop and get lunch (at your own cost). Back to the studio for a cuppa and an afternoon of stitching.

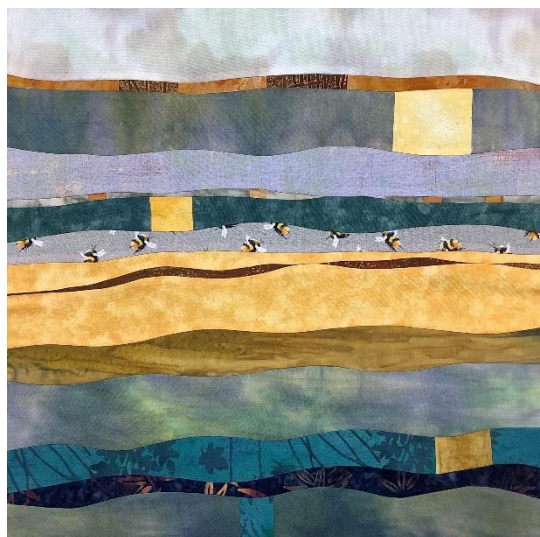
## Day Five

Location permitting, I will collect you in my minibus to arrive at the croft between 9.30 and 10am for our last full day of stitching. We will pack up and leave the studio at 2.45pm to head for Nunton Steadings just south of Balivanich. This is the home of our new distillery which has very quickly become famous for their Downpour Gin. We will be treated to a gin tasting of all three flavours and get the background story about Kate and Johnny, the owners, as to how they have managed to achieve their dream of owning their own distillery. Back into my minibus and back to your hotel for your last evening meal before taking the ferry home on Saturday.

**The cost of the five-day course for 2023 is £550.**

## STITCHING PROJECT

We will take our inspiration from the colours of the islands and the flora and fauna. To get a flavour of island colours you might want to visit [www.visitouterhebrides.co.uk](http://www.visitouterhebrides.co.uk). Once we have created your fabric background, we can think about superimposing some of the flowers of the machair or the wildlife that is important to the ecology of the Hebrides. I will have cutting boards and rulers at the croft but please bring your own rotary cutters. Bringing your own machine is preferable as you are familiar with it. Please tell me if this is a problem as I will then arrange to hire some machines for you. There will be an additional charge for this. A full Requirements List will be sent to you after making your full balance payment.



YouTube



70 SILVERKNOWES VIEW, EDINBURGH, EH4 5PS, SCOTLAND  
33A LOCHEPORT, NORTH UIST, OUTER HEBRIDES, HS6 5EU  
MOBILE: 07773 268135  
[www.patarchibald.com](http://www.patarchibald.com) e-mail: [info@patarchibald.com](mailto:info@patarchibald.com)

# PatArchibald

Textile Artist, Teacher and Writer

## SKETCHBOOK PROJECT WITH CORINNE KRAUSE

Corinne will supply everything that you require for the workshop so you will be able to dive right into the project under her instruction and enjoy your morning with her.



## KNITTING PROJECT FOR SHORELINE POTTERY WORKSHOP

Before you come to the croft and join Louise for your porcelain and pottery workshop you will need to do a little bit of preparation. Bring one knitted square around 4" inches in size, but no larger. It can have some lace work and indeed the lacework details can look stunning. A slightly looser knit gives a more defined finished piece. Your knitting will be dipped in porcelain and then fired. The porcelain will shrink through firing. The knitted piece needs to be in 100% cotton, the colour doesn't matter as it will burn out through firing anyway. The finished pieces can be framed in box frames.



The pictures show small pottery pieces with glass pools on the inside, but if you wish to change them into pin cushions, then you can add some wee details to the outside to have mini pools, so the glass colour is on the outside. Your pieces will be fired later in the week and posted on to you.



Please note that returnees will be offered a slightly different itinerary and project.



YouTube



70 SILVERKNOWES VIEW, EDINBURGH, EH4 5PS, SCOTLAND  
33A LOCHEPORT, NORTH UIST, OUTER HEBRIDES, HS6 5EU  
MOBILE: 07773 268135  
www.patarchibald.com e-mail: info@patarchibald.com